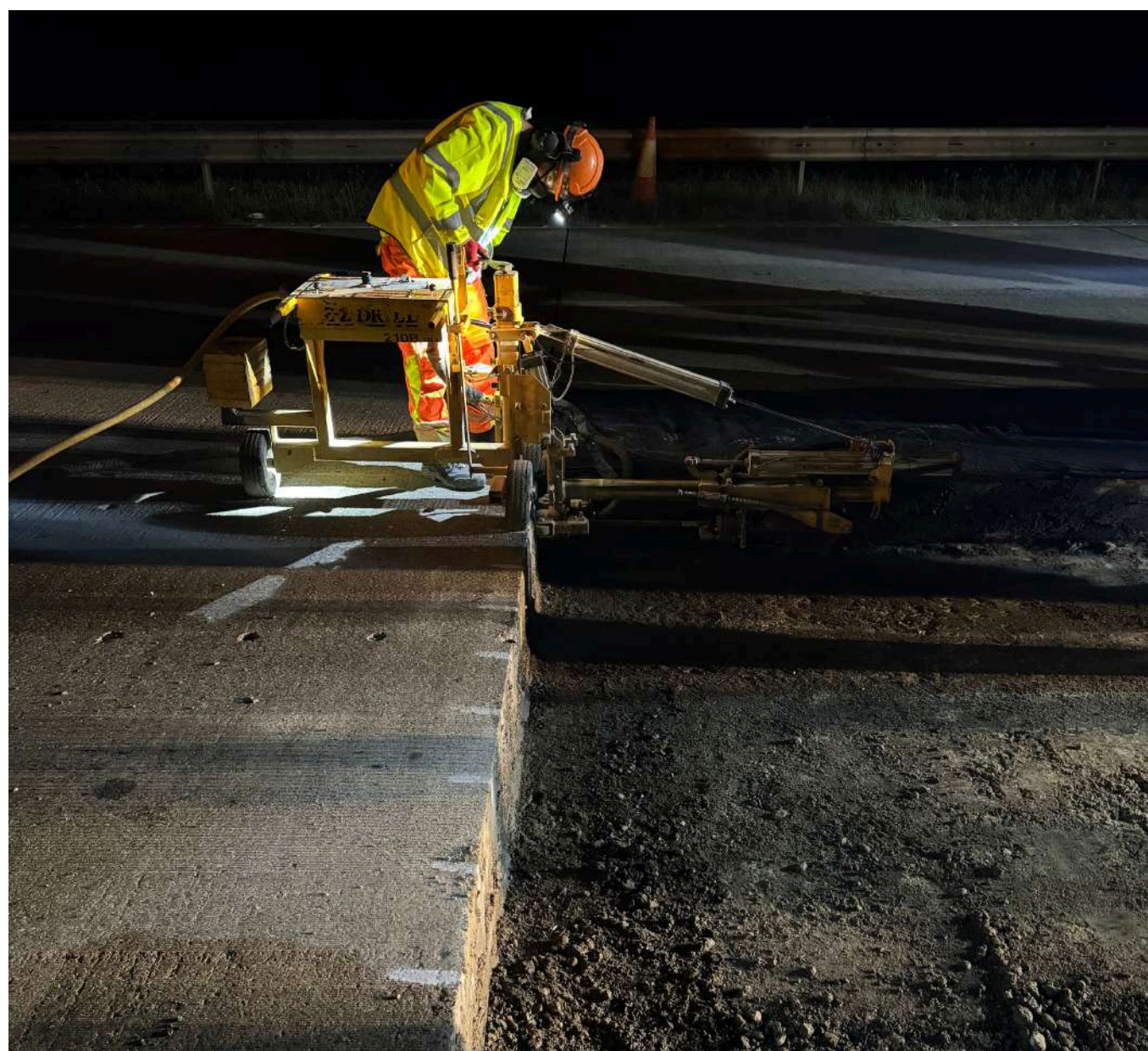
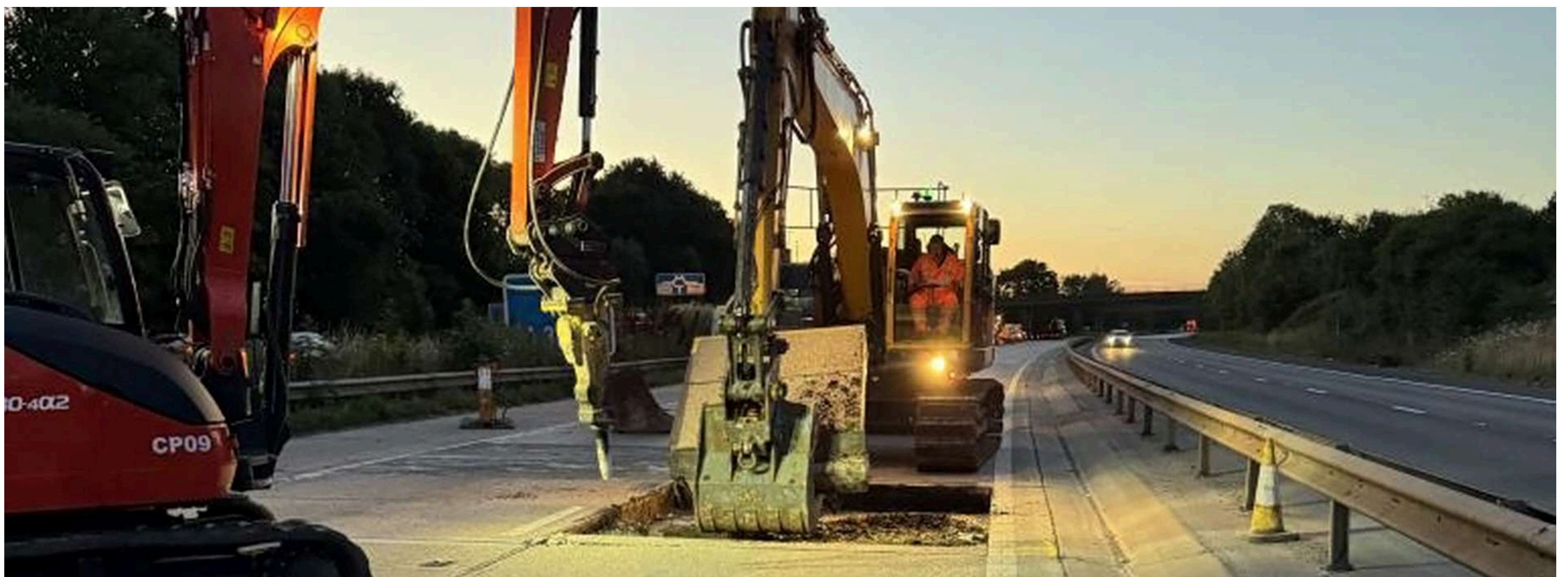




LMS | HIGHWAYS

CONCRETE BAY REPLACEMENTS ON THE M271

LMS Highways successfully delivers a time critical repair project to the M271.



The Challenge: Why the Work Was Needed

LMS Highways were instructed to carry out urgent repair work to the M271 Southampton on behalf of MJ Church. MJ Church secured this work through their place on the general civils segment within the National Highways SDF contract.

The M271 was originally built back in 1975 and is a major travel corridor for HGV vehicles due to being the main route to Southampton Docks. Because of its age and extensive use, the carriageway is approaching life expiry and causing some serious health and safety concern for National Highways.

A full replacement is due to happen within the next RIS (Road Investment Strategy) period but urgent interventions were needed immediately to fix safety critical defects and extend its life until that time comes. This is where LMS Highways were able to help by delivering full-depth concrete bay removal and reinstatement using our new rapid set concrete.

Delivering Solutions: Scope of Work

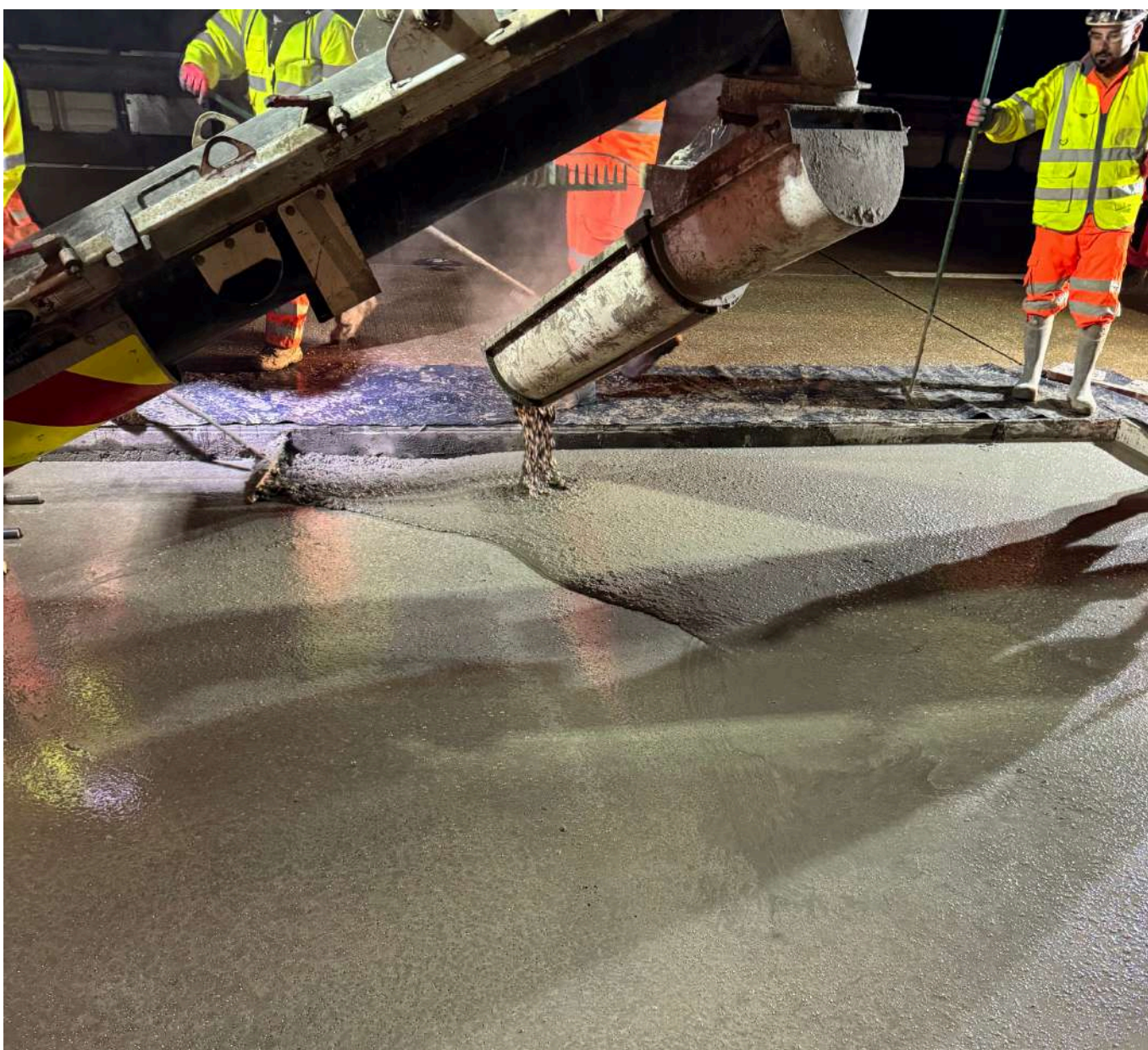
Starting in early July, the teams refined process began with the removal of the existing bays by using a vacuum-lift system which is capable of removing large, continuous sections of concrete in one complete piece and lifted straight onto a disposal truck. For smaller sections or areas with cracking, a pecker and grab lorry are the safest and most efficient method of removal as the deep-set cracking throughout prevents a strong vacuum seal from being achieved.

With over 35 years' experience in infrastructure our highly trained crews are capable of adapting our methods and processes immediately in order to best suit the requirements and variable conditions of a job.



Once they've finished removing the damaged concrete, the crew begins to prep the area with a waterproof membrane and steel tie bars before pouring the fresh concrete.

A key highlight of this project was the use of our newly developed, rapid-set, low-carbon concrete mix created in partnership with Premcrete. The decision to use our new concrete was due to having a very short window of road space availability. This advanced mix eliminates the need for conventional heating equipment and provides a significantly reduced curing time. As a result, we can achieve an impressive output of six full bay replacements per night, minimising disruption to road users and ensuring the project was completed within the tight three-week schedule.



Choosing Expertise: Why LMS Highways Was Selected

LMS Highways and MJ Church have had a long-standing history of working together through previous projects over the years. This well established relationship and the fact LMS Highways are leading the field when it comes to urgent, time critical projects like this one, made LMS an obvious choice for MJ Church.

Over the past 10 years LMS Highways have specialised in urgent repairs and rapid concrete reinstatements with much success. This has been achieved with a combination of meticulous planning, highly skilled workforce, bespoke plant and most recently, the development of our new, innovative material, Premcrete.

“After many years of development, to have our material approved and going in the ground on a National Highways scheme is a great achievement. We’re incredibly excited about the positive changes this will bring to the industry.” – **Paul Winter, Managing Director for LMS Highways**

Results That Matter: Project Outcome

In just three weeks, LMS Highways completed the removal of the existing deteriorated sections of carriageway and the reinstatement of over 200 cubic metres of concrete. The use of our rapid set concrete mix ensured minimal disruption to road users, the Southampton Docks and guaranteed the project was completed on schedule and to the highest standards.

- 14 Shifts
- 500+ Tonnes of Concrete Removed
- 200+ Cubic Metres of Concrete Installed



This successful project highlights LMS Highways' commitment to delivering innovative, efficient, and high-quality solutions for essential infrastructure improvements.

“MJ Church appointed LMS Highways as a specialist to deliver a high-profile emergency concrete bay repair scheme to National Highways on the M271. They supported the ‘design and build’ nature of the scheme, suggesting innovative products such as Premcrete and assisted with the departure process. At every step from design, pre-construction, delivery and handover, the quality of the support that LMS Highways provided to us and our Client was exceptional. I was fascinated by the latest concrete product technology that was being used for the first time on the National Highways Strategic Road Network that rapidly cured offering a Customer driven solution for the future repair schemes. I was able to stand on freshly poured and finished concrete 35 minutes after pouring!

The work ethic of the site team was incredible, and to see so many enthusiastic operatives on site using this product and finishing it expertly was a true reflection of the business's values and a team approach. Thank you particularly to Paul Winter, Paul Burton and Selina Clark for supporting all stages of this seamless project.” – **Stuart Clarke, SE Regional Manager MJ Church**